



BOOMARINE SUPPLIES LTD.

FOAM FILLED FENDER

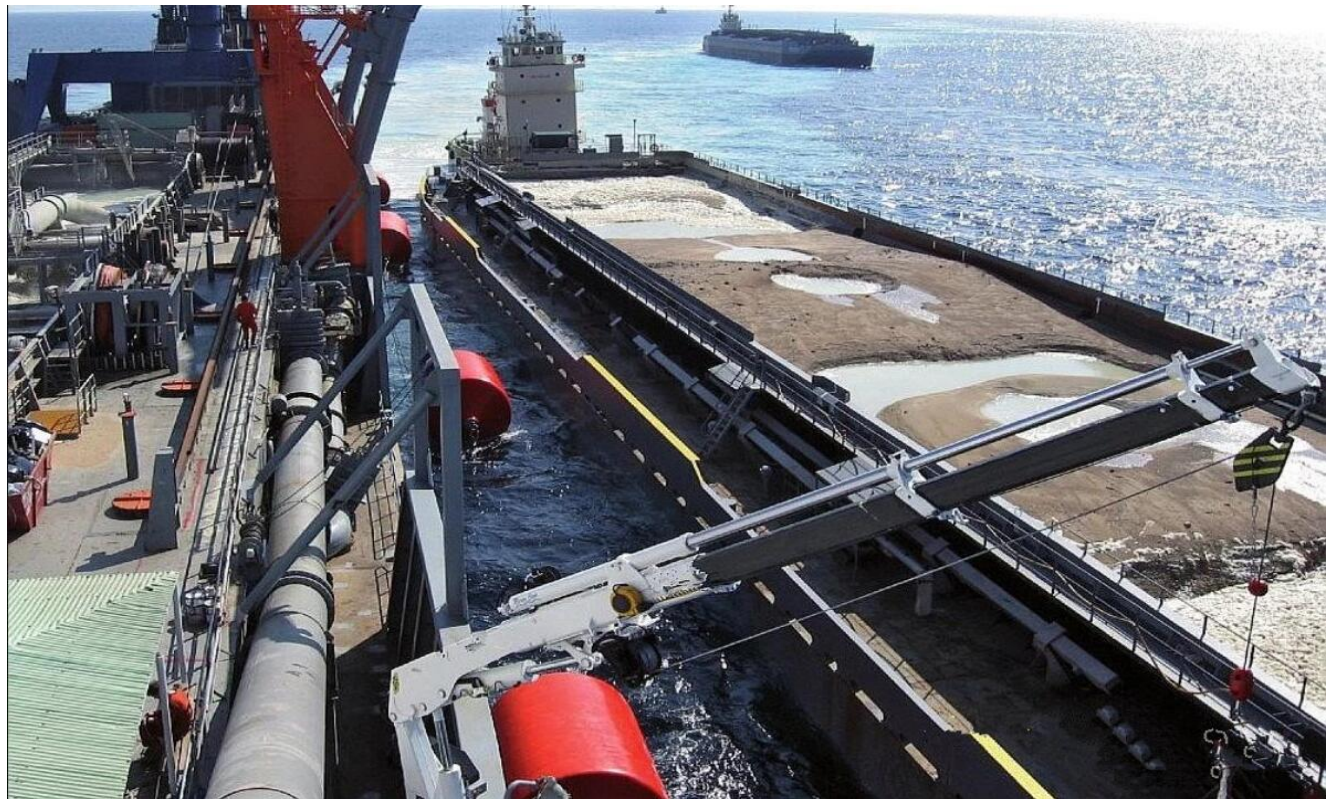
Address: 1099 jingwei Avenue,
Jiulongpo District, Chongqing, China

Email: sales@boomarine.com
Web.: www.boomarine.com

INTRODUCTION

Polyurea EVA foam filled fender is a new fender that adopts the high tech and high elastic foaming EVA as the buffer medium as the core, spiral reinforcement in the middle and polyurea coating outside with USA-imported special spraying equipment.

By means of foreign advanced experience, we further developed the fender by using closed cell and hydrophobic EVA as the core and polyurea fabric as the skin. This fender is widely used for big vessels, yachts, marine platforms and ports.



APPLICATION

1. Cruise ships
2. Container vessels
3. Bulk cargo
4. Ro-Ro and ferries
5. Oil and gas tankers

FEATURES

1. Good floating performance, not influenced by tidal range
2. Bright color, could provide various of colors according to client's requirement.
3. Don't need to check when using.
4. No need air inflation, good resistance to sea water, acid and alkali. Use life 10-15years
5. No risk of blasting, high safety
6. High energy absorption and reaction force from small to large, it's suitable for open sea terminals, gravity port, especially for large tidal range docks and ship to ship, ship to dock.



TYPES

1) Rope Type Foam-filled Fenders



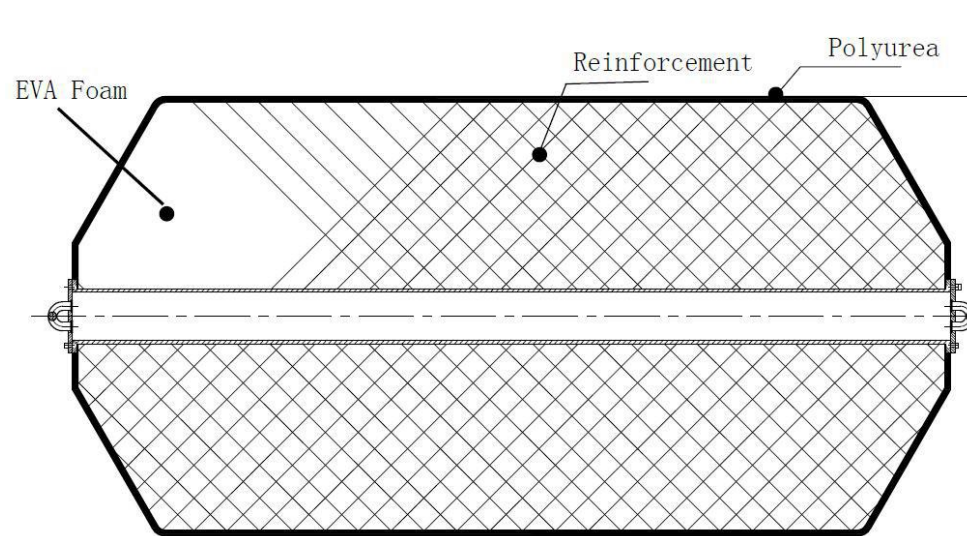
2) Flange Type Foam-filled Fenders



Material Details :

- 1) Modified closed cell EVA with density 110~130kgs/m³.
- 2) The cord fabric is used for the frame with strength 313N per single line, winding the cord and spray polyurea, no delaminating, strong durability
- 3) Spraying polyurea as a coat, anti-aging& anti corrosion.
- 4) All hardware that used on fender body are hot galvanized.

PERFORMANCE & SPECIFICATIONS

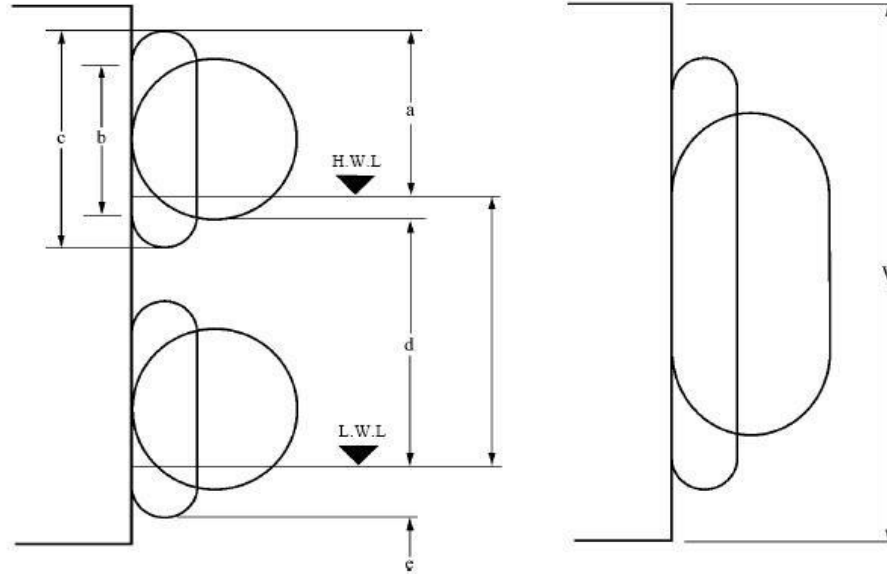


Specification(D x L)	D (mm)	L (mm)	Compression Deflection at 60%				Reference Weight (kgs)
			Reaction	Force	Energy	Absorption	
500x1000L	500	1000	71		8	34	
600x1000L	600	1000	86		12	45	
700x1500L	700	1500	161		27	101	

1000x1500L	1000	1500	205	49	206
1000x2000L	1000	2000	274	64	275
1200x2000L	1200	2000	337	93	405
1200x2400L	1200	2400	390	110	475
1350x2500L	1350	2500	463	145	626
1500x3000L	1500	3000	624	216	927
1700x3000L	1700	3000	696	273	1191
2000x3500L	2000	3500	990	456	1923
2000x4000L	2000	4000	1110	505	2298
2200x4500L	2200	4500	1396	679	2992
2500x4000L	2500	4000	1386	781	3434
2500x5000L	2500	5000	1750	985	4272
3000x5000L	3000	5000	2050	1410	6411
3000x6000L	3000	6000	2460	1695	7293
3300x6500L	3300	6500	2950	2245	8335
4500x9000L	4500	9000	19650	7860	21460

- Reaction force and energy absorption tolerance is $\pm 10\%$
- Weight tolerance is $\pm 10\%$
- Special size could be offered with customers' needs

INSTALLATION FIGURE



Type	D(mm)	L(mm)	a(mm)	b(mm)	c(mm)	d(mm)	e(mm)	w(mm)
1000x1500	1000	1500	965	950	1350	210	385	2000
1200x2000	1200	2000	1190	1140	1620	230	440	2600
1500x2500	1500	2500	1515	1420	2050	260	535	3250
2000x3500	2000	3500	2030	1900	2700	320	670	4500
2500x4000	2500	4000	2470	2380	3380	470	910	5200
3300x6500	3300	6500	3350	3140	4460	530	1110	8500